

## Petersfield Pond Enhancement

# Update...

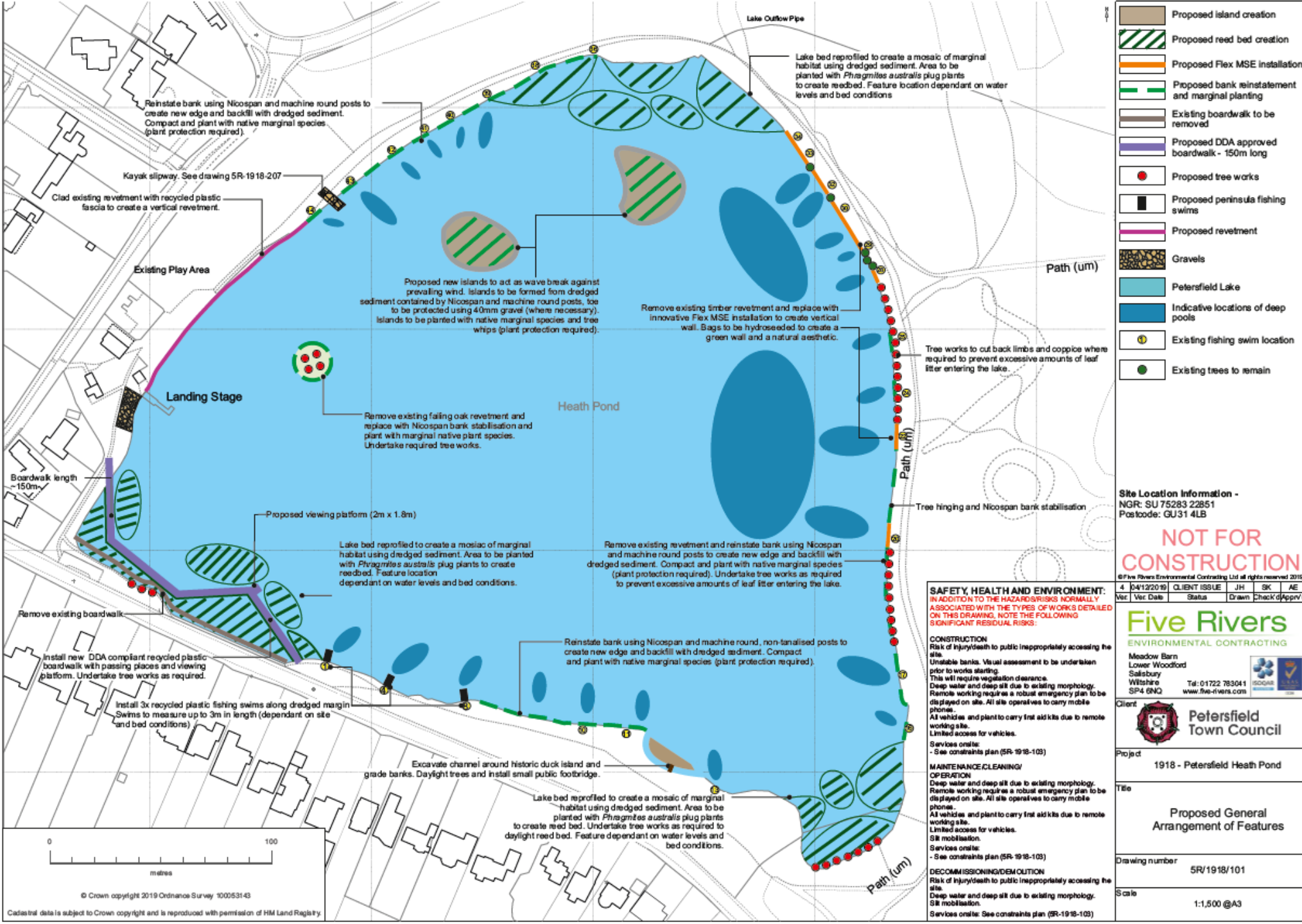
- 150m of boardwalk has been completed with boards.
- 140m of boardwalk completed with handrail posts.
- 50m of boardwalk completed with top handrail.
- 6m of posts in on the duck island bridge.
- 25m of posts on the cladding has been installed.
- 2nd island construction has been constructed and filled.
- Posts and nicsopan installed around existing island by end of the day.
- Bank stabilisation along Sussex Road completed – snagging to do.
- Removed all old oak sleepers along bank.
- Tidied up hinged willow.





# General Arrangement

- FlexMSE bank stabilisation
- Revetment replacement
- Reed bed installation – more cellular
- Peninsula swim installation x 3
- Boardwalk installation
- Deeper marginal areas
- Replace existing island revetment
- Installation of 2 x islands
- Restore Duck Island and install footbridge







# Challenges...

- Freezing cold wind, sleet, driving rain and snow!
- Rising water levels
- Working in deep water - the team getting wet!
- Very muddy compound
- Manging the public
- Getting the posts into the bed in deep water
- Handling materials in the wet







































































# Next Steps....

---

- We may have to come back when the water level has dropped to finish off the cladding and FlexMSE due to the height of the water.
- Planting & hydroseeding of cells and islands.
- Install fishing swims x 3.
- Boardwalk completed with handrails this week.
- Duck island bridge completed by the end of the week.
- Existing island restoration complete.
- Post and rails on cladding completed by the end of the week.
- Start cells in front of boardwalk.
- Continue constructing cells along the South bank.
- Grand opening of boardwalk in May!





# Thank you for listening!

## Any questions?