

Petersfield District Councillors Report – Cllr Julie Butler

I thought it would be good to concentrate on Lockdown 2. With the new restrictions from the Government we are doing everything we can to support our businesses and our residents.

I called an extra Community Group meeting on the 4th November to ensure that all areas of the district still had enough capacity to support again during the lockdown period. I am happy to report that all Town and Parishes reported back that everyone is coping well, but we are monitoring the situation. All seven foodbanks have been contacted and at the time of writing this, all have sufficient supplies. Again, we will monitor to ensure this remains the case. Our Community team will work closely with Community First who are leading regarding the volunteers.

The Local Resilience Centre that opened in March has remained open throughout, with reduced staffing levels in last few months. More staff have been brought back to cover since Lockdown 2. It will be operational each weekday until 5pm and for the first two weekends from the 5th November. **Please guide anyone to our helpline number 0333 370 400.**

Clinically extremely vulnerable residents (CEV's) have been advised to stay away from shops and pharmacies, but they are encouraged to exercise outside and attend medical appointments. A letter has gone out to all residents from the Government to all our residents that are on this list asking them to register online to a National Shielding Service System. If they require assistance. Hampshire County Council have already started to contact CEV's to check to see what support, if any, they may require.

Our Environmental Health team are working hard to meet the increased demand from Covid 19, whilst ensuring they also continue to maintain other public health functions. New regulations governing the second Lockdown are now in force, along with the accompanying guidance to go alongside this. They are not the same as with the ones in the spring. Parts relate to businesses which will now fall to the local authority to enforce and this will be the team that will lead on this.

Businesses that have been forced to close as part of the current national restrictions can now claim a grant through EHDC. Businesses and venues that may qualify are non-essential retail, hospitality venues, such as cafes, restaurants, pubs and bars, hair, and beauty salons to name just a few.

For more information visit www.easthants.gov.uk/local-restrictions-support-grant-closed

On the 7th October, EHDC supported the DWP in delivering an online jobs fair to support job seekers in East Hampshire and Havant. DWP and EHDC sourced vacancies and employers to be part of the event which was promoted via our social media. There were 55 vacancies from 40 different employers posted in the hour event and it was DWP's most successful event in the South West. Follow up work is now taking place to see how many were successful in finding employment through joining the event.

A quick update on the East Hampshire Lottery for you all. It was launched in April 2020, so probably not the best time, but despite all of this has been running successfully for seven months. Ticket sales have steadily increased with 47 live good causes across East Hampshire with 307 regular ticket holders. £8,430 has been raised for local good causes such as community buildings, sports clubs, health and support and any other local community groups.

Finally, I would like to welcome our new Climate Champion, Cllr Elaine Woodard. I look forward to working with her in my capacity of Cabinet Lead for Climate Change. There is a lot to do, and our climate panels have identified their key priorities to work on.

I am keen to engage with all our local green groups, Towns and Parish councils, as well as the County Council. These will be to share ideas and successful initiatives that will jointly encourage behaviour change. I want to these to start on a virtual basis in the New Year.

I am happy to say that EHDC and Havant BC were successful in bidding for £3.1million for the Green Homes Grant scheme, which is an extension of the Warmer Homes initiative. We were part of a consortium of councils to secure this funding.

We need to identify 300 homes that it will benefit across all the successful council areas within the consortium for approximately £10k for each property. Delivery needs to be fast as it needs to be completed by the 31st March 2021.

We are working on a first come, first serve basis, so looking to target our communications to the right neighbourhoods. It will mean that families can save money on the cost of making energy improvements to their homes. By applying for vouchers, they will be able to insulate their homes to reduce energy use and install low carbon heating to lower carbon dioxide emissions from their homes.

Vouchers will cover two thirds of the cost of qualifying energy efficiency or low carbon heating improvements to homes, up to a maximum government contribution of £5,000. If you, or someone in your household, receive certain benefits you may be eligible to get a voucher to cover 100% of the cost of the improvements. The maximum value is £10,000 towards the cost of making the home efficient. It is only open to homeowners and residential landlords. To check with you are eligible for low income support go to <https://www.gov.uk/check-eligible-green-homes-grant>

If you know of any household that are in this category, please guide them to the link above.

Otherwise to apply go to <https://www.gov.uk/guidance/apply-for-the-green-homes-grant-scheme>

On Track Sensory Room Report

Project overview

FitzRoy is a national charity committed to transforming the lives of people with learning disabilities and autism. We provide support nationally to over 800 adults with a range of learning and physical disabilities and autism, in supported living, registered care, day and community services, membership groups, and in their own homes.

In 2019 FitzRoy launched an appeal to raise valuable funds to transform an unused room at the OnTrack Day Centre in Petersfield into an immersive sensory room.

On Track currently serves 90 adults with learning disabilities and/or autism and physical disabilities. It provides a safe, welcoming place for members to make friends, try new activities, and learn new skills. Many of our OnTrack members have profound disabilities, including severe sensory and mobility impairments.

On Track Sensory Room Update

Thanks to the extremely generous grant from Petersfield Town Council alongside other contributors, we have now fulfilled our funding ambitions and are close to unveiling a modern, adaptive, fully accessible sensory room.

The project had originally been due to complete by August 2020, but due to COVID-19 restrictions we were unable to meet this deadline. However, work eventually started in the summer once our contractors were able to work once again.

The flooring was fitted first followed by the electrical works and painting. Our original plan for the sensory room included equipment which, after further consideration of the users' needs and disabilities, was deemed too large. As such, in conjunction with our supplier, Rhino UK, it was decided that we needed to slightly reduce the number of items we would purchase. By doing so we have ensured the sensory room and environs will not be too overwhelming for our members. Extensive thought has also been put in to developing procedures for the space to be COVID-secure including putting a limitation on the number of people using the room and introducing additional hygiene practices.

We are hoping to open the sensory room in December, or as soon as we can at the end of lockdown. There is great excitement among the people we support and the staff. We are so looking forward to seeing our members enjoying the therapeutic, educational and stimulating environment designed especially for them.

We would like to thank Petersfield Town Council for their support, and we would be pleased to welcome members of the Grants Panel to visit the new sensory room when we are able to.

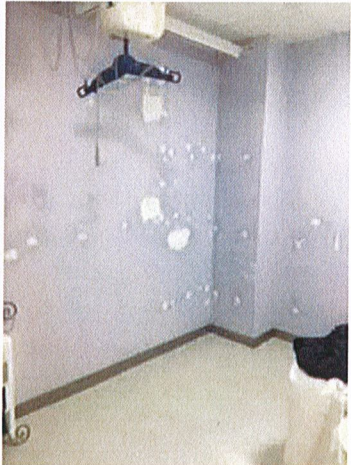
Sensory room space before the refurbishment



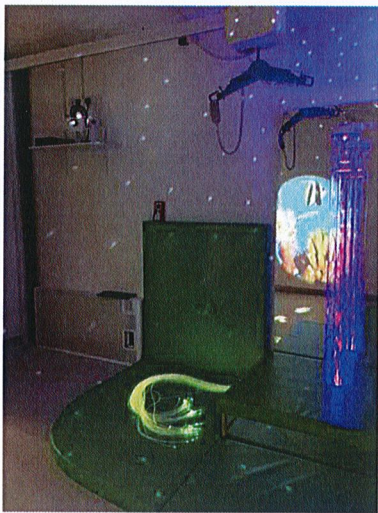
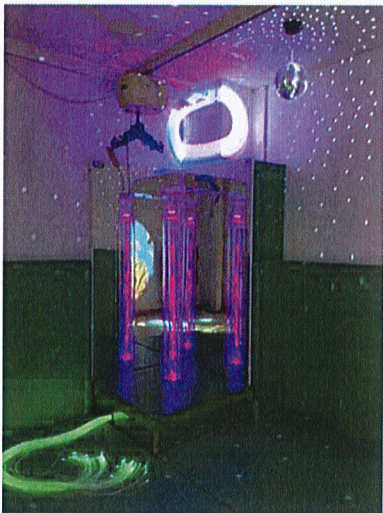
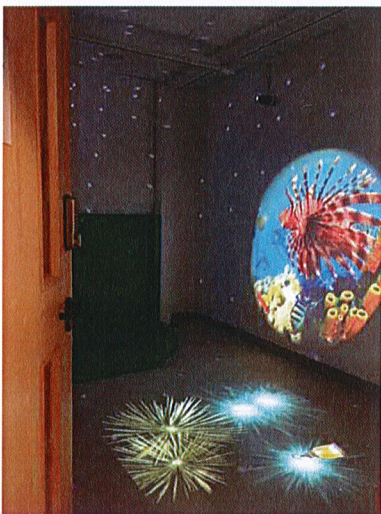
'It has been fantastic to see the unused space transformed.

We are really excited about the sensory room, and our members even more so!'

Maria, Deputy Manager, On Track



Sensory room space after the refurbishment



Budget

The original expenditure budget was £16,935.57 (with VAT £20,322.68). This is how we have spent the budget.

Item	Cost
Flooring	£810.00
Electrics	£508.80
Sensory equipment and Installation	£15,407.21
Total	£16,726.01